

66/1

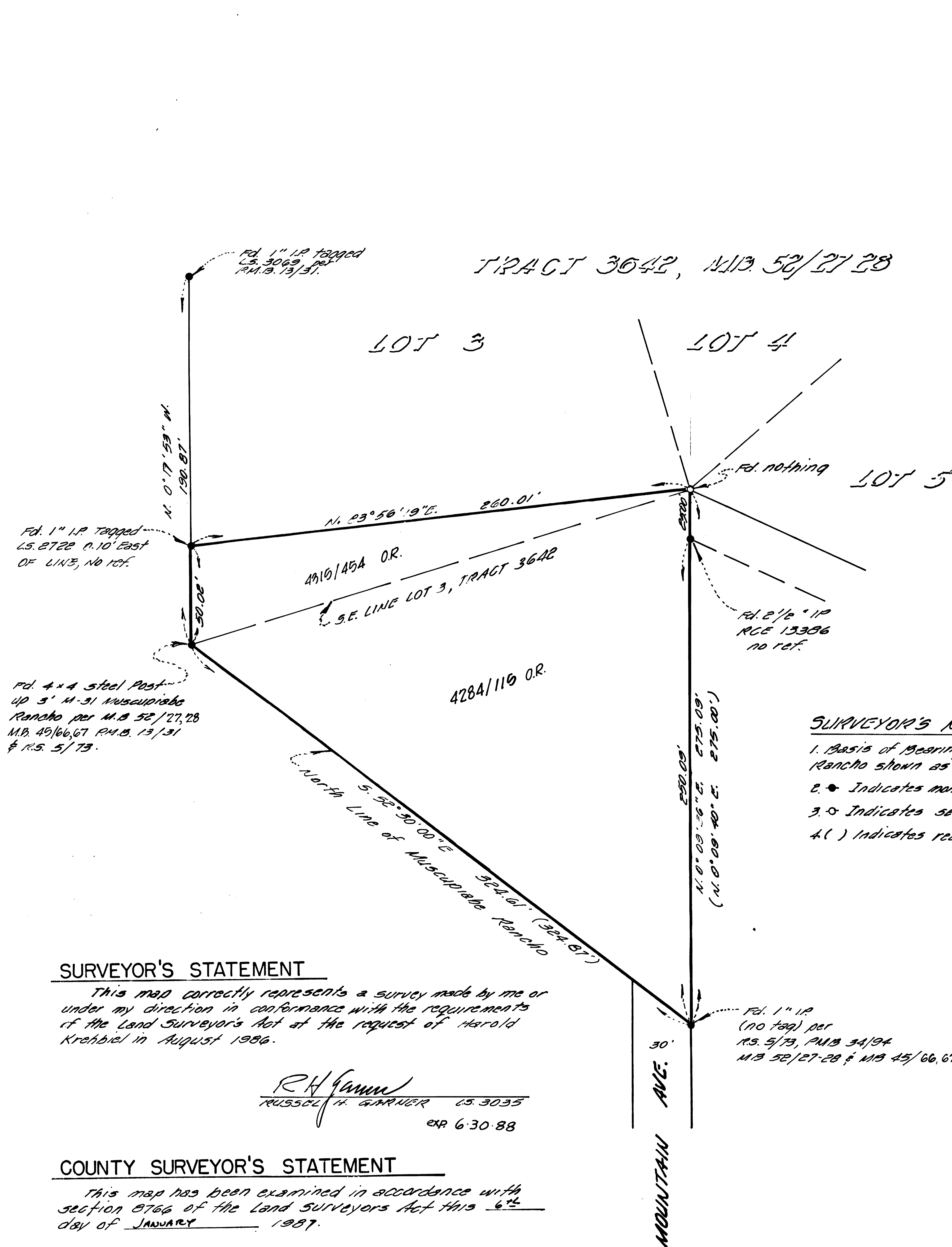
RECORD OF SURVEY

CITY OF SAN BERNARDINO
OF A PORTION OF THE SOUTHWEST 1/4 OF FRACTIONAL SECTION 13,
T.1N.R.4N. S.B.M. AND A PORTION OF LOT 3, TRACT NO. 3642,
M.B. 52/27-28, IN THE COUNTY OF SAN BERNARDINO, STATE OF
CALIFORNIA.

GARNER TROY & ASSOC.

CIVIL ENGINEERING & LAND SURVEYING

OCTOBER 1986



SURVEYOR'S NOTES

1. Basis of Bearings: The North Line of Muscupiabe Rancho shown as S. 52° 30' 00" E per M.B. 49/66, 67
2. • Indicates monuments found as noted.
3. ○ Indicates set 1" IR L.S. 3035
4. () Indicates record date per M.B. 52/27-28.

SURVEYOR'S STATEMENT

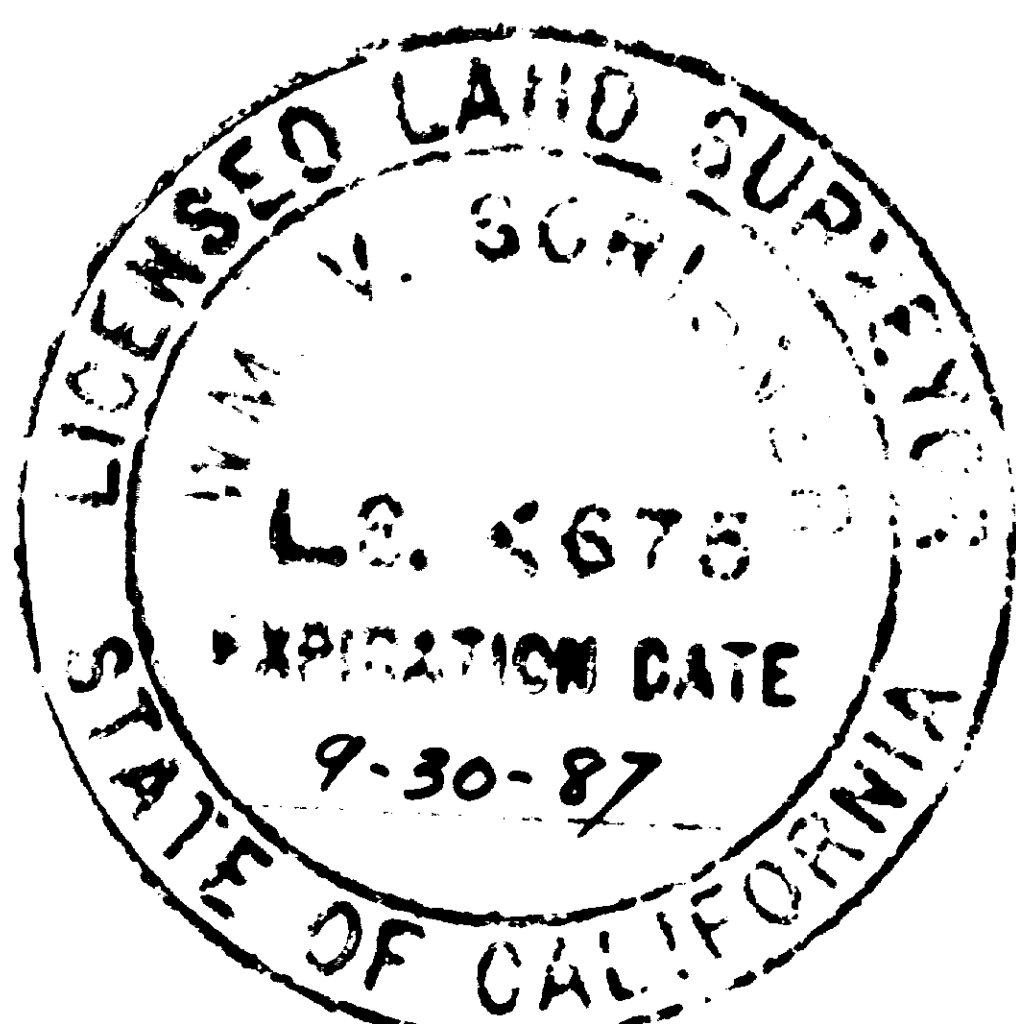
This map correctly represents a survey made by me or under my direction in conformance with the requirements of the Land Surveyor's Act at the request of Harold Krehbiel in August 1986.

RH Garner
RUSSELL H. GARNER L.S. 3035
EXP. 6-30-88

COUNTY SURVEYOR'S STATEMENT

This map has been examined in accordance with section 8766 of the Land Surveyors Act this 6th day of JANUARY 1987.

Glaude D. Tomlinson, County Surveyor
County of San Bernardino, California.
By *Umberto Sauter* Deputy
L.S. 4675



87-007625

FILED, REQUEST OF
Harold Krehbiel
ON Jan. 9, 1987
AT 3:35 P.M. IN
BOOK 66 PAGE 19
OF Record of Survey
SAN BERNARDINO COUNTY RECORDS
FEE \$6.00

66/1